

PORT OF REFUGE CONSIDERATIONS



Time of events – PoR critical factor

activity	time	accumulate
fire broke out		0
LOF contract signed	2	2
Proceed to <u>PoR</u> option 1	34	36
Anchored <u>PoR</u> 1	13	49
Instructed to leave <u>PoR</u> 1	17	66
Nitric Acid inhibitor expired	1	67
Arrival at <u>PoR</u> option 2	7	74
Vinyl acetate inhibitor expired		83
Styrene monomer inhibitor expired		85
Nitric Acid container starts leaking		91
Proceeding to <u>PoR</u> option 3	21	95
arrival <u>poR</u> 3 and removal 7 DG containers	2	97
Container with Nitric Acid becoming unstable	7	104
Discharge completed	28	125



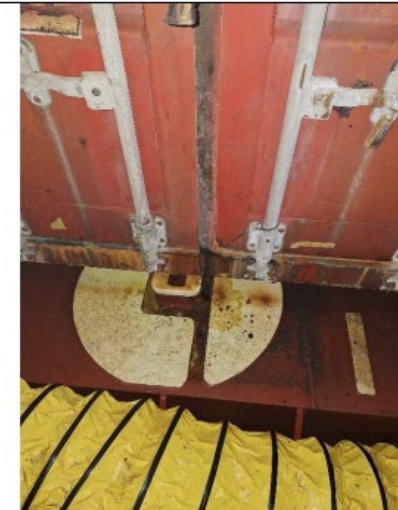
Instability of DG cargo due to long period

Nitric Acid containers

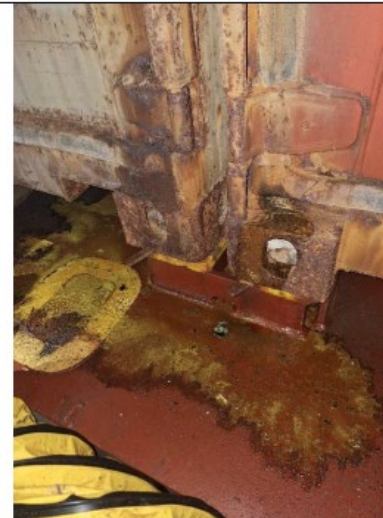
- Container in position, Nitric Acid, is showing signs of a pooling of product
- Fine sand located at the base of the container absorb the product
- A decontamination procedure is being followed using the ladder leading to the container
- Minimal personnel are present at the container, with access to the container



Container 11 01 82



Signs of product leaking



Signs of product leaking



pH paper test – result pH 0

Fleet developments: Ras Al Khaimah

Newbuilding Office, Workshop and Storage

- E&I workshop and storage
- Warehouses 2300m²
- Modern office facilities for 50 people
- Own quay side prepared for shore power
- Solar powered
- Storage area of 60,000m²

